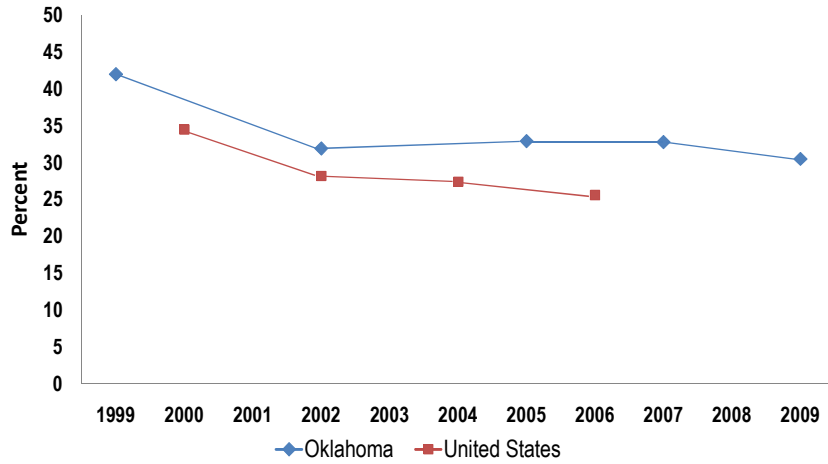


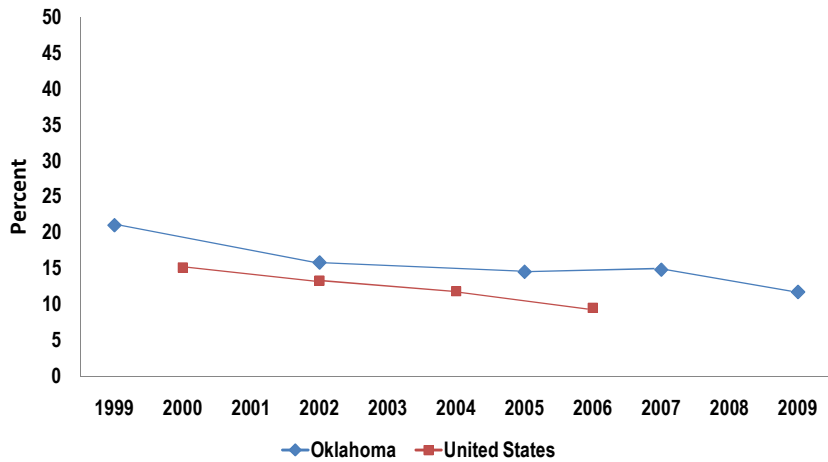
# Current Use of Any Tobacco Product

## High School



	1999	2000	2001	2002	2003	2004	2005	2006	2007	2008	2009
OK	42.0			31.9			32.9		32.8		30.5
US		34.5		28.2		27.4		25.6			

## Middle School



	1999	2000	2001	2002	2003	2004	2005	2006	2007	2008	2009
OK	21.0			15.8			14.5		14.8		11.7
US		15.1		13.3		11.8		9.5			

Table 18. Weighted Preferred Response Report for Oklahoma  
 Region 1 (State) Public Middle Schools -- Based on Standard Survey YTS2009  
 z Distribution Method -- Weighted Percents and Unweighted Sample Sizes for Each Column  
 Reported by Gender, Grade and Race  
 Analysis Variable CTOBUSE -- Percent current tobacco use -- those who have use any form of tobacco in the past 30 days

	Gender/Grade/Race							Black or Hispanic		
	Total	Female	Male	6th	7th	8th	White	African American	or Latino	Other
%	11.7	8.6	14.6	9.1	12.9	12.8	10.4	10.3	12.8	15.2
95% CI	2.6	3.4	2.4	2.7	4.3	3.9	2.3	4.6	5.1	5.4
n	2,167	1,050	1,105	641	700	821	1,280	253	265	366

%=Percentage, CI=Confidence Interval, n=Cell Size

Table 18. Weighted Preferred Response Report for Oklahoma  
 Region 1 (State) Public High Schools -- Based on Standard Survey YTS2009  
 z Distribution Method -- Weighted Percents and Unweighted Sample Sizes for Each Column  
 Reported by Gender, Grade and Race  
 Analysis Variable CTOBUSE -- Percent current tobacco use -- those who have use any form of tobacco in the past 30 days

	Gender/Grade/Race							Black or Hispanic			
	Total	Female	Male	9th	10th	11th	12th	White	African American	or Latino	Other
34.7	%	30.5	22.7	38.1	24.1	29.9	34.5	35.1	31.7	24.8	18.3
7.9	95% CI	3.5	3.1	6.1	4.1	3.6	4.2	9.6	3.2	6.2	6.2
335	n	1,776	872	895	646	490	380	257	1,146	127	168

%=Percentage, CI=Confidence Interval, n=Cell Size